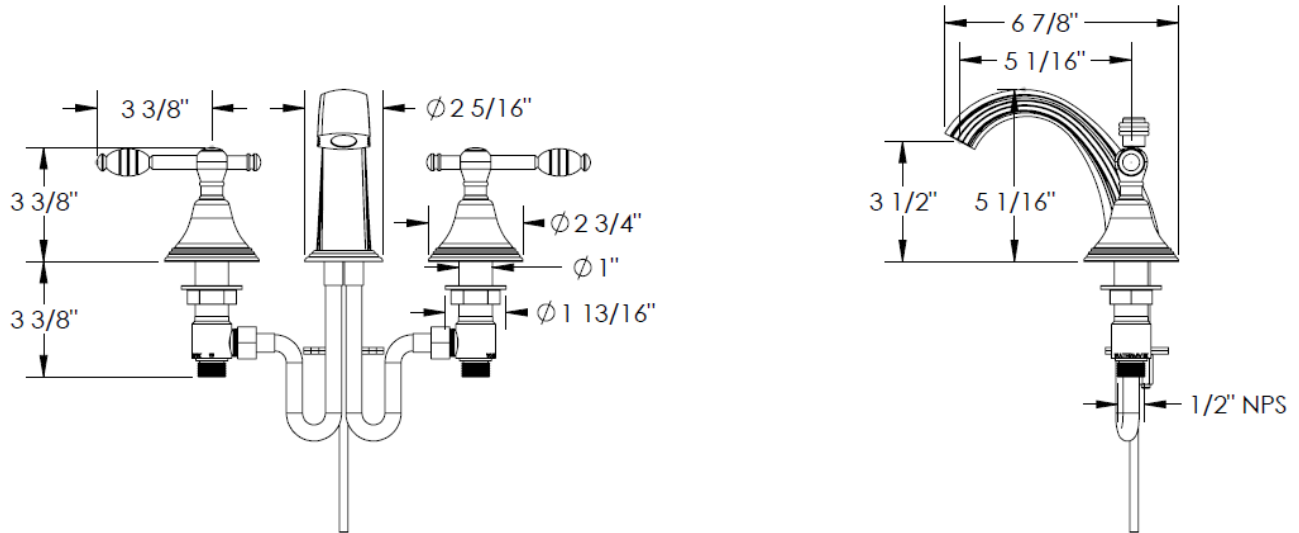


FEATURES

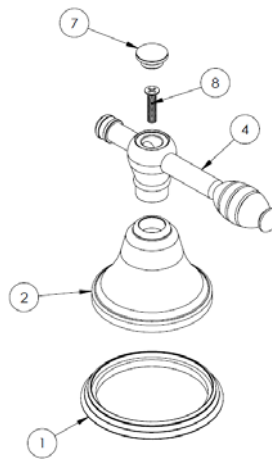
- ¼ turn washerless ceramic disc valve cartridges
- Flexible hose connection for 8" to 16" spread installations
- Flow rate 1.5 gpm (5.7 lpm) maximum flow rate
- Solid brass construction
- Listed by IAPMO, CSA, NSF, and other municipalities
- Warranty:
 - Limited lifetime warranty (residential use)
 - One year (commercial use)
- Shipping weight (lbs.) 10
- Shipping dimensions (in.): 29x12x4



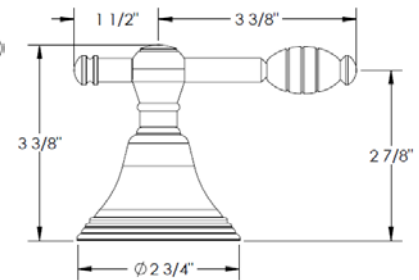
ITEM NO.	PART NUMBER	QTY.
1	201-2-SPT	1
2	201-2 SPOUT BASE	1
3	501-LIFT-ROD	1
5	142-LOCK-NUT	4
6H/6C	SS-502 Valve Body	2
7H/7C	SS-502 Cartridge	2
8	NEOPERL CACHE PCA TJ	1
9	SPT-MNTNG-KIT-1-SCRW	1
10	SPT-MNTNG-KIT-1-WSHR	1
11	SPT-MNTNG-KIT-1-RBBR-WSHR	1
12	SPT-MNTNG-KIT-1-NUT	1
14	SUPPLY-HOSE	2

HANDLE TRIMS

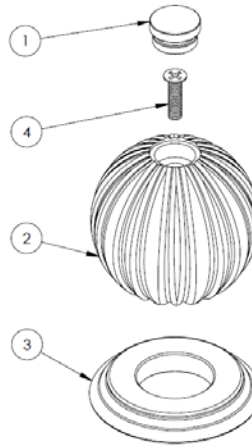
Detroit (Code: I)



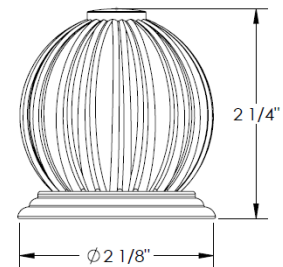
ITEM NO.	PART NUMBER	QTY.
1	A-ESC-RING	1
2	A-ESC	1
4	I-LVR	1
7	A-POST-CAP	1
8	CR-FHM1 0.164-32x0.75x0.75-S	1



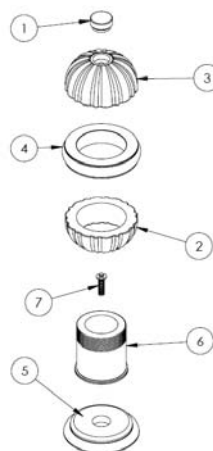
Everest (Code: KK)



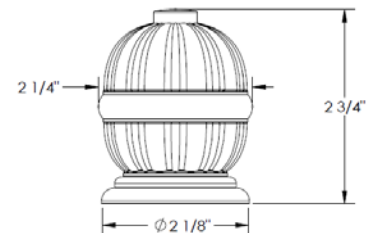
ITEM NO.	PART NUMBER	QTY.
1	KK-CAP	1
2	KK-KNOB	1
3	KK-ESC	1
4	CR-FHM1 0.164-32x0.625x0.625-S	1



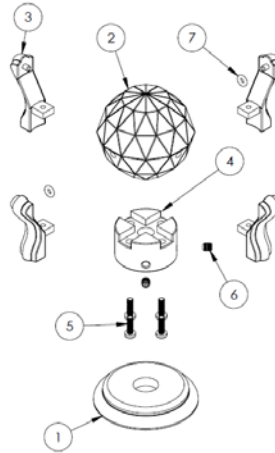
Bricolage (Code: R1)



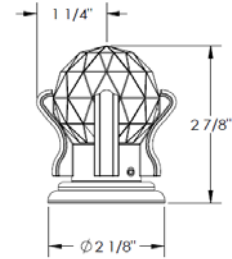
ITEM NO.	PART NUMBER	QTY.
1	R1-CAP	1
2	R1-KNOB-BTM	1
3	R1-KNOB-TOP	1
4	R1-KNOB-RING	1
5	R1-ESC	1
6	R1-POST	1
7	CR-FHM1 0.164-32x0.625x0.625-S	1



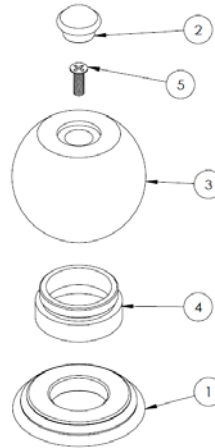
Imperial (Code: R2)



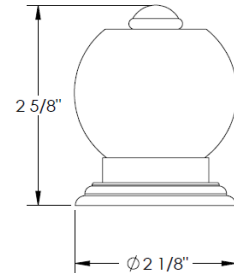
ITEM NO.	PART NUMBER	QTY.
1	R1-ESC	1
2	R2-CRSTL-KNOB	1
3	R2-KNOB-ARM	4
4	R2-BASE	1
5	B18.6.7M - M3 x 0.5 x 10 Type I Cross Recessed PHMS -10S	4
6	SSCUPSKT 0.164-32x0.1875-HX-S	2
7	AS568 - 006	4



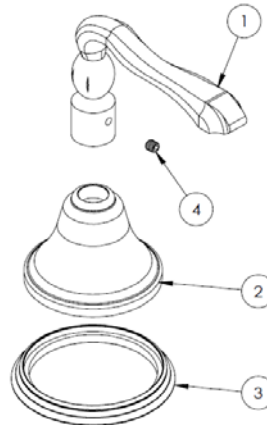
Double Spiral (Code: R3)



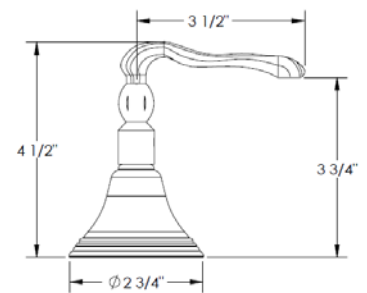
ITEM NO.	PART NUMBER	QTY.
1	W-ESC-RING	1
2	R3-CAP	1
3	R3-KNOB	1
4	R3-KNOB-BASE	1
5	CR-FHM1 0.164-32x0.5x0.5-S	1



Nobel (Code: U1)



ITEM NO.	PART NUMBER	QTY.
1	U1-LVR	1
2	A-ESC	1
3	A-ESC-RING	1
4	SSCUPSKT 0.19-32x0.1875-HX-S	1



IMPORTANT INSTALLATION INFORMATION

- USE TEFLON TAPE OR PIPE SEALANT FOR THREADED CONNECTIONS
- DO NOT USE PLUMBER'S PUTTY ON ANY OF THE BRASS COMPONENTS
This will cause the finish to tarnish and void the warranty. A non-corrosive Alkoxy Silicone is recommended.
- DURING SWEATING OF LINES DO NOT OVERHEAT CASTING
Overheating may cause damage to internal mechanism
- COPPER ADAPTORS MAY BE REQUIRED TO COMPLETE YOUR INSTALLATION

For technical support, please call 718-257-2800

Rev. 1/1