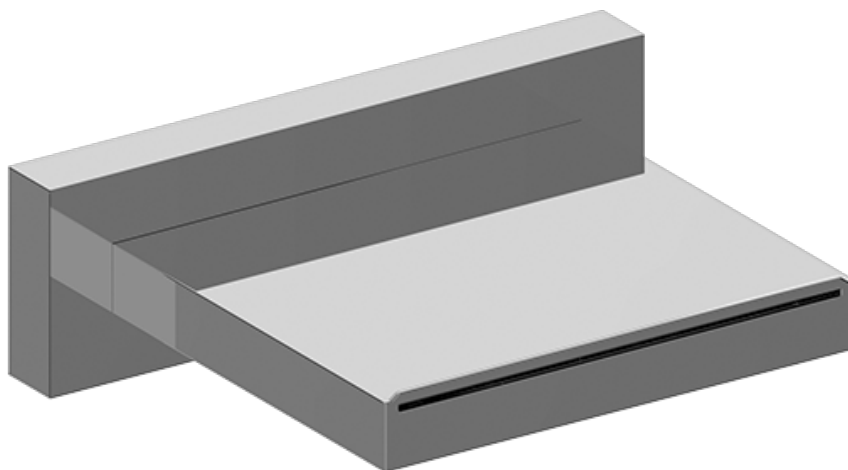


SHOWER
Cascade Tub Spout
G-8577

GRAFF[®]



Information

- Stainless steel
- Cascade flow
- Wall-mounted installation
- 1/2" NPT male thread inlet
- Tub spout flow rate ~5.3 at 45 psi

Finishes



Polished
Chrome



Stainless
Brushed

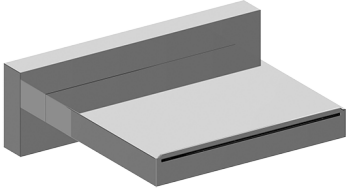


Stainless
Polished

G-8577

Aqua-Sense Collection
Cascade Tub Spout

GRAFF®



Product Features

- Stainless steel
- Wall-mounted installation
- Cascade function
- 1/2" NPT male thread inlet
- Flow rate ~5.3 gpm @ 45 psi

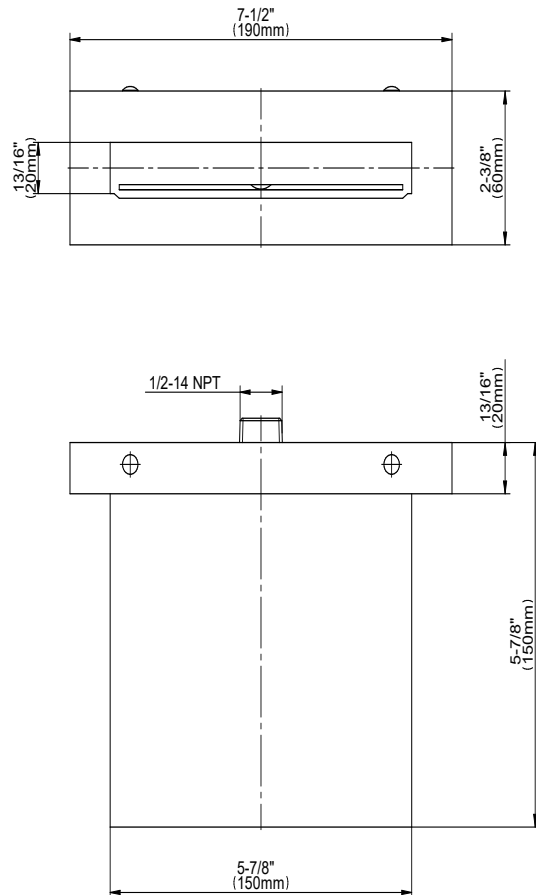
Available Finishes

- Polished Chrome
G-8577-PC
- Brushed Stainless
G-8577-SB
- Stainless Polished
G-8577-SP

Warranty

- Limited lifetime warranty

For complete warranty information go to
<https://www.graff-designs.com/en/info/faqs>



The measurements shown are for reference only. Products and specifications shown are subject to change without notice. Revised 03/2019.

www.graff-designs.com | phone: 800-954-4723