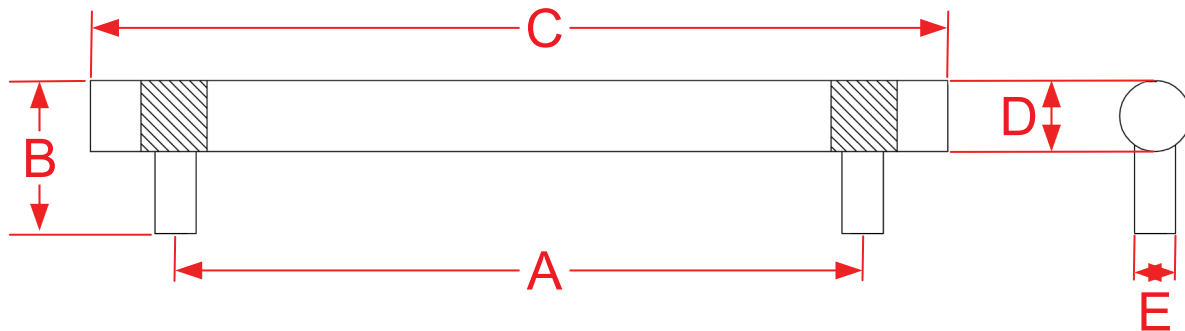


# 545, 546 and 547 Series Cabinet Door & Appliance Pulls

Finishes for Life  
TARNISH-FREE GUARANTEED



Part #	A Center to Center	B Projection	C Overall	D Diameter	E Base
545	4.0000"	1.2500"	5.0000"	0.5000"	0.3125"
546	6.0000"	1.3750"	7.5000"	0.6250"	0.3750"
547	8.0000"	1.5000"	10.0000"	0.7500"	0.5000"
Custom Sizing Available					



Manufacturing Fine Architectural Hardware  
in the USA Since 1927



Copyright 2015  
Colonial Bronze Company  
All rights reserved  
[www.colonialbronze.com](http://www.colonialbronze.com) -  
860.489.9233