



**Features**

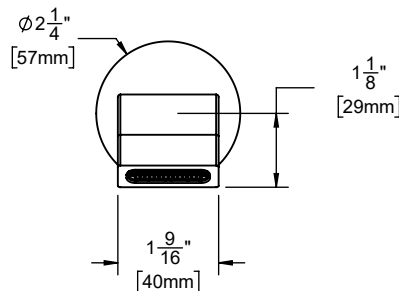
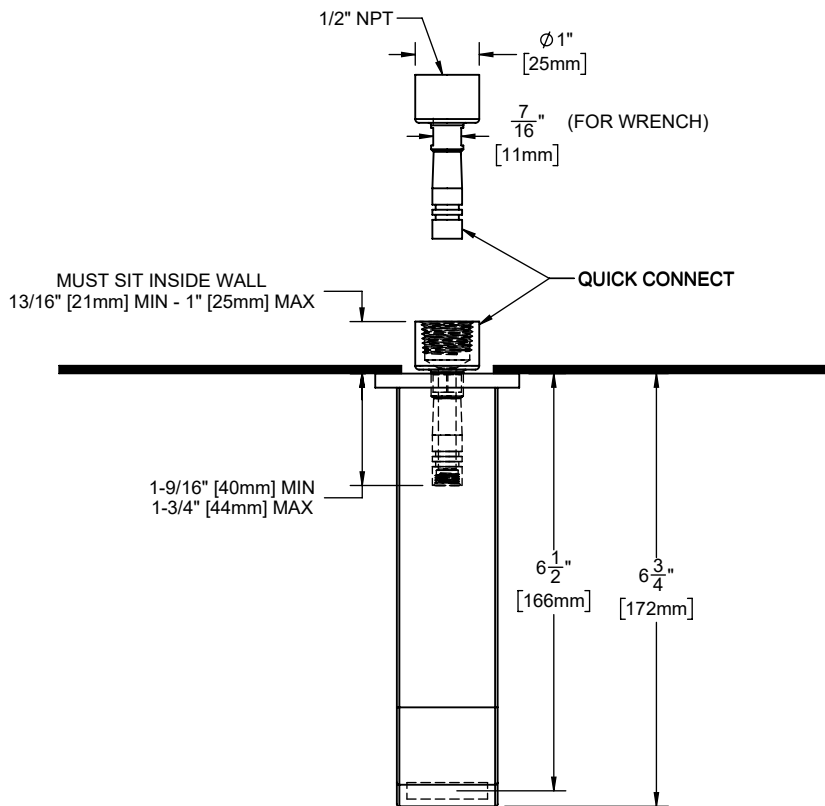
- Available in 28 finishes including 13 PVD finishes
- All brass construction
- 6-3/4" wall to end of spout
- 10.0 gpm (37.8 L/min) max flow rate
- Quick connect



**Codes/Standards Applicable**

Product meets or exceeds the following:

- ASME A112.18.1/CSA B125.1



THROUGH-HOLE SPECIFICATIONS		
MIN	RECOMMENDED	MAX
Ø 1-1/4" [32mm]	Ø 1-1/4" [32mm]	Ø 1-5/8" [41mm]

DIMENSIONS TO NEAREST 1/16"  
[DIMENSIONS TO NEAREST 1mm]